

ST. PAUL'S
COLLEGE

SAINT PAUL LUTHERAN
HIGH SCHOOL

ST. PAUL'S
COLLEGE HIGH

Alumni Elected to District Leadership Roles

Four alumni were elected to the office of district president and seven alumni were elected to a vice president position at conventions last spring and summer. Alumni hold these positions in nine of 35 synodical districts.

Iowa West District



Rev. Paul Sieveking, (SPC '70),
Fort Dodge, president, fourth term

Michigan District



Rev. John Duerr, (SPC '76),
Hope, Warren, fourth vice president

Mid-South District



Rev. Ken Lampe, (SPC '67),
Memphis, president, third term

Missouri District



Dr. Ray Mirly, (SPCH '62, SPC '64),
St. Louis, president, second term



Rev. Alan Wollenburg, (SPCH '71, SPC '73),
Concordia, Sikeston, first vice president

Montana District



Rev. Terry Forke, (SPC '76),
Billings, president, second term



Rev. Arlo Pullmann, (SPCH '80, SPC '81),
St. John, Laurel, first vice president

North Wisconsin District



Dr. Timothy Wenger, (SPCH 62, SPC '64),
St. Luke, Wisconsin Rapids, third vice president

SELC District



Rev. Paul M. Hoyer, (SPC '74),
Holy Cross, Lake Mary, Florida,
third vice president

Southern District



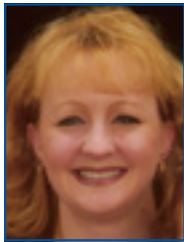
Rev. David Lewis, (SPC '82),
Crossroad, Hernando, Mississippi,
second vice president

Southern Illinois District



Rev. George Gude, (SPCH '59, SPC '61)
Dorsey, Illinois, second vice president

From the SPAA President...



What brings you back?

Homecoming? Reunions? Street Fair (Concordia Fall Festival)? A child attending Saint Paul? Do you ever make it back to Concordia? Back to Saint Paul?

What is it that brings you back?

Maybe you have been back recently for a reunion, for the annual auction, or even for homecoming.

Maybe you haven't been back in years. You've moved too far away, or you simply haven't made the trek. Maybe you have always intended to get back to the beautiful Saint Paul campus but timing hasn't been right. Why not start planning a return trip now?

Saint Paul has so many things that have stayed the same. The same Christ-centered focus. The same beautiful campus with its majestic center building — Baepler. The same dedicated faculty and staff — even some familiar faces among them. There are also many things that have changed. Biltz has been completely renovated. The pool was filled in to create an annex off the gym. The victory bell has a beautiful new lighted shelter.

What is it that brings you back? And how can we help get you here?

- If you want to make a short stop just passing through and perhaps stay in the Biltz hotel, call for reservations: 660-463-2238 ext. 317.
- If you want to plan a reunion, contact alumni coordinator Walter Loeber to help fine tune the details. Contact him at splhsalumni@yahoo.com
- If you want to bring a prospective student — maybe even your child, niece, nephew, or grandchild — call the admissions office to help arrange a visit: 660-463-2238 ext. 227.

Come back. See what an amazing place Saint Paul still is. See how this place still nurtures the faith of young people. See how your memories will flood back to your times here. See Christ in the center. Come back.

Because of Him!

Beth (Royuk) Pester (SPLHS '92)

Class of '89 Reunion



Photo taken by Kurt Brink

Members of the SPLHS Class of 1989 met in Concordia September 10-13, weekend of the Concordia Fall Festival. In addition to taking in the festivities in downtown Concordia, the class had a breakfast at Topsy's, a dinner at Biffle's, and a BBQ at Concordia Park. Class members stayed in Biltz Hall, attended the Saints home football game, and toured the campus, visiting their dorm room, and favorite classrooms. Memories abounded in the three-hour campus tour. The class assembled in front of Baepler for Heide Bergt Brink's husband Kurt, a professional photographer, to take the class picture.

Can You Identify?



Can you identify the eight individuals in this photo and the year it was taken? The first alum to correctly provide the answers to the alumni office by emailing splhsalumni@yahoo.com will receive a pewter Christmas ornament with a picture of Baepler Hall on it.

The first person to correctly identify the photo in the summer 2009 issue was **Cindy Loeber Heins (SPC 1982)**, who named Robin Griffin, Deborah Backmann, Tina Horenkamp, Cindy Loeber, Janyce Watkins, Cheryl Humphreys, Sheri Meyer, Sandy Meyer. These were the pom-pom girls for the 1980-1981 basketball season.



Golfers raise \$8,000

The sixth annual Saints Golf Tournament at the end of August was a big success, according to Monte Pitsch, SPLHS Athletic Director. Over \$8,000 was raised with 100 golfers participating.

In the six-year history of the classic, close to \$45,000 has been raised for the athletic department. Sports equipment, a trailer, and weight room equipment, have been purchased with the funds.

"Thank you, alumni, who participated as golfers, sponsors or donors," said Pitsch.

Singing Saints Tour Goes Northeast

The 2010 Singing Saints tour is scheduled for March 12-20. Anyone interested in hosting a concert in Iowa, Illinois, Wisconsin, Michigan, Indiana or Ohio contact Bill Gasau at wgassau@splhs.org.

Victory Bell Has New Home

The home for the Victory Bell started to lean about a year ago. As time went on the lean was more prominent and eventually became dangerous. Local area alumni stepped in to remove the structure and build and install a new home for the bell. Among those assisting in the project were **Andrew and Jennifer Meyer Jones (SPLHS '90)**, **Blake Hasselbring (SPLHS, '07)** **Shannon Burrow (SPLHS '89)**, **Craig Renno (SPLHS '88)**, **Richard Beerman (SPLHS '93)**, **Kyle Fiene (SPLHS '90)**, **Kent Kunkel (SPLHS '89)**, and **Pat McKeage (SPLHS '89)**. Friends of the alumni and school who helped



were Brian Maddox, Darrin Woodall, Jan Renno, Mike Shisler, Charles Downey, and Donnie Fiene. Further details of the project are on the alumni Web site. The new structure has lighting and is very prominent on the walkway between Baepler and Fine Arts, and between the gym and the dining hall. The original structure was a gift from the SPC Class of 1963.

Association Requires Financial Support

The ongoing ministry of your Alumni Association depends on the financial support of the alumni. The school no longer provides financial support. However, the school does provide office space, utilities, and office equipment.

The organization's three major areas of mission are to communicate through the newsletter (about \$1,800 an issue), provide scholarships (\$1,000 annually), and to employ an alumni coordinator (\$500 monthly).

The financial picture as of this writing

Current bank balance \$902

Expenses between October and February

Newsletter (current issue) \$1,800

Alumni coordinator \$2,500

Your financial support is vital to the ongoing mission of your Alumni Association.

If you are able to help, fill out the form below. Enclose the form and your check in the envelope with this newsletter and send it to the alumni office at SPLHS in Concordia.

Together we can enable our Alumni Association to move forward in providing assistance, news, and information to our alumni.

Markus Reimke, (SPCH '60), SPAA Treasurer

SPLHS Christmas Concert

Concert Band and Singing Saints
Sunday, December 13 • 7:00 p.m.
St. Paul's Lutheran Church

Vote For Your Favorite Instructor

With a financial gift to the Saint Paul Alumni Association, alumni are asked to identify their favorite Saint Paul teacher. Teachers eligible for consideration must have taught for at least five years and not be currently on staff at Saint Paul Lutheran High. A list of teachers is posted on the alumni Web site, www.splhs.org. Click on ALUMNI, then Alumni Updates.

The teacher who receives the most of votes will have his/her photo displayed in Biltz Hall for the coming year and be identified as so honored by the alumni. Currently, a photo and bio of former Saint Paul teacher Lando Otto is on display in Biltz Hall.

Conversion of Saint Paul Day The 3rd Annual Day of Reflection

Saturday, January 23, 2010

Saint Paul Lutheran High

Concordia, Missouri

Rev. Dr. Ken Schurb, Chapel Speaker

Dr. Adam S. Francisco, Concordia Theological Seminary

The Challenges of Islam: Theological and National

Registration 9 a.m.

Evening banquet 5:30 p.m.

Contact Rev. Paul Mehl at 660-463-2238 ext 222

 Please cut here.

Keep Us Posted!

We want to hear from you! Do you have a new address? Is there any information about yourself that you wish to pass on to your classmates in "Alumni Jottings?"

Alumnus(a) _____

Year of graduation: (HS) _____ (C) _____

Address _____

City, State, Zip _____

Phone _____

E-mail _____

What's new with you? (Please print or type) _____

Write on back if more space is needed

Please detach, fold and return in the enclosed envelope along with your contribution.

Support Your Saint Paul Alumni Association

Enclosed is my financial support for the Alumni Association

\$ _____ **Thank you for your gift.**

Please make checks payable to "Saint Paul Alumni Association"

Vote for your favorite faculty member when you contribute

(for listing of faculty, go to www.splhs.org; ALUMNI, then click Alumni Updates for the list of the faculty)

Faculty member: _____

**Please complete and return this form with
your financial gift in the enclosed envelope.**

 Please cut here.

 Please cut here.

From the Executive Director...



Moeller Hall lounge has always been a popular meeting place.

Moeller Dorm will celebrate its 50th year in the month of October (Moeller Hall and Weis Gymnasium were dedicated on the same day). Because of the increase of female students at our synod's teacher colleges, St. Paul's College began to admit women in 1954. The first female students stayed in a refurbished faculty home until the girls dorm could be built.

Patterned after its sister dorm (Brust Hall) across the quad, Moeller Hall would have a flat roof, three floors and an apartment for the supervisor. At capacity it would house around 70 students.

As one can imagine, the introduction of co-eds on campus made some notable differences in the demeanor of the student body. The wife of the college president would host tea parties for the girls, complete with elbow-length white gloves, so that our young ladies would be exposed to proper etiquette. Boys tended to bathe more.

One of the concerns with having girls on a campus that had been exclusively male-dominated for 75 years was just that: there would be girls on campus. It was decided that female teachers and dorm supervisors would also be helpful. The first women instructors came on board in the mid-50's: Vivian Hopmann, Lydia Steinbrueck, Verla Mehl, Viola Freudenberg, Ruth Gienapp, Barbara Neeb, and Lois Heilman. There were extra rules that had to be put into place. There was the famous 18-inch "synodical distance" rule that was supposed to separate couples. Holding hands was "vorbotten" and one even had to wait a few minutes to sit in a chair that had been vacated by a person of the opposite sex.

No doubt there were plenty of innovative ways to navigate through these parameters since many couples met at St. Paul's, got married, and are celebrating 50 years of wedded bliss even as I write this. By 1968 when girls were finally admitted to the high school department, it was marked by sighs of relief from the college girls who were constantly having to turn down those young boys from Biltz. It has been suggested that some of the tension in previous years between SPC and the local community stemmed from the fact that there were too many young men in Concordia for the number of women who were available to date.

What a blessing those Moeller girls have been to the church at large, the families they became a part of, the classrooms that they taught in, and the people's lives that they touched. These girls embraced the mission of this school and even became "sons who do the master's bidding!"

In this last decade our Moeller girls have come from over a dozen countries and speak a variety of languages. They still hang out in the lounge, cook meals in the kitchen, and do their laundry in the basement much like at any other dorm. The big difference now is that this is the last dorm in the LCMS that houses high school women. A place that once prepared college women to enter church work has become a place that prepares younger women to enter college. In all of these endeavors the Lord has worked through these students and this ministry and we celebrate the 50 years of blessings that Moeller Hall has brought to God's kingdom.

Rev. Paul Mehl (SPCH '78, SPC '80)

Adventure of a Lifetime

Since February 2008, I've been living in Hong Kong and working for LCMS World Mission as Communications Specialist for the Asia region. I will always look back on my experience here as a major turning point — that time in my life when God picked me up, turned me around, and set me off on the adventure of a lifetime.



Josh Lange

In 2002, as a high school senior at St. Paul, I had plenty of ideas for what the future might hold. Overseas missionary service definitely did not make "the list."

During college and in the years after, I stayed loosely connected to my Christian faith through occasional church attendance and Bible study. However, I wasn't really seeking God's will for my life. I continued to live for myself, and as a result, my relationship with God remained fairly shallow.

In 2006 I graduated from the University of Missouri and moved to St. Louis to begin working for a small advertising agency. I saw it as a good first step along my planned career path in the world of marketing and advertising. God had something better in mind.



Filming an English class being taught by LCMS missionaries in Tokyo, Japan.

In the spring of 2007, some friends and family made me aware of a new position with LCMS World Mission called "communications specialist", and they asked me to consider it. I did not consider it. How could I go be a missionary? It didn't make sense. It didn't fit with my plans.

Slowly, though, I started to feel an indescribable pull toward this exciting but scary opportunity. As usual, I resisted God's calling as long as possible, but I eventually found that I could resist no more. I submitted an application, and here I am.

In my role as communications specialist, I strive to connect LCMS Christians in the U.S. with mission work in Asia. In part, this means visiting LCMS World Mission team members throughout Asia and documenting their work in writing and on film. These resources may be used in LCMS publications, web sites, videos, newsletters, presentations, or reports. My duties have taken me to Hong Kong, Macau, Taiwan, Vietnam, Cambodia, Thailand, India, Japan, and South Korea.

I love my job and the travel that goes along with it, but that hasn't been the real adventure. The real adventure for me has been the spiritual one. God is doing amazing things in Asia, and I've had the honor of connecting with some of the people He is using here. In getting to know these men and women, I'm learning what it means to be a follower of Jesus. It's exciting to be a traveler on this journey, and I look forward to seeing what God has in store for the next leg of the adventure.

LCMS World Mission provides many opportunities for long-term and short-term missionary service. There are also opportunities for serving as a teacher in one of the many Lutheran schools in Asia. Find out more at www.lcmsworldmission.org/service.

Learn more about the work of LCMS World Mission at <http://blog.lcmsworldmission.org>.

Visit Josh's web site at <http://jwalange.wordpress.com>.

Alumni Jottings

(To share information about yourself in the next newsletter (mid-February), please use the bottom half of page 3 and mail to the alumni coordinator, P.O. Box 719, Concordia MO 64020 along with your financial support. Updates may be e-mailed to splhsalumni@yahoo.com.)

SPCH '38, SPC '40, **Eldor Droegemueller**, Mercer Island, Wash., died earlier this year.

SPCH '40, SPC '42, **Harlan Wendler**, Springfield, Ill., writes that he and his wife Dorothy observed their 63rd wedding anniversary in June. "Wonder if the Alan Runge written up in your last newsletter was a close relative of Francis Runge who graduated from SPC in 1938. I remember when I was in Quinta that Francis had placed a large picture of Christ in Gethsemane in the visitors hospitality room right near the entrance of Biltz Hall. I still recall the Latin motto of the State of Missouri which Professor Reese taught us, *Salus Populi Suprema Lex Esto*, the welfare of the people shall be the supreme law.

SPCH '47, SPC '49, **John Fajen**, St. Louis, died on September 1. He had served as missionary in Nigeria and worked on a Kukele Bible translation. After serving in Nigeria, he was on the staff at the International Center, and was involved with recruitment of many of our missionaries.

SPCH '55, **Raymond Esche**, St. Louis, died November 15, 2007, in St. Louis.

SPCH '67, SPC '69, **Ronald Heimsoth**, Fort Worth, Texas, died August 29 in Fort Worth. He served several churches in Oklahoma until accepting a call to Trinity Lutheran Church at Fort Worth in 2002.



SPCH '68, SPC '70, **Dennis Meyer**, Omaha, Nebr., was named vice president, mortgage loan officer at TierOne Bank's West Maple Office in Omaha in February. Dennis has been with TierOne since 2000 and has 25 years in the banking industry. His new responsibilities include originating residential

loans and assisting customers with other mortgage lending needs.

SPC '69, **Les Stroh**, St. Louis, was awarded an honorary Doctor of Laws Degree by Concordia University, Ann Arbor, Mich., during commencement exercises May 9. Les is the founder of Cornerstone, an organization dedicated to "empowering people in organizations for quality of life, product and service." Les is a senior consultant with University Associates Consulting and Training Services. Les's wife, **Deborah Schwab Stroh**, SPC '69, is an artist and early childhood educator.

SPCH '63, SPC '65, **Gary Galen**, Troy, Ill., writes, "I have retired after 38 years in ministry, the last 19 at Trinity Lutheran, Edwardsville, Ill. Have four married children and five grandchildren. Will continue to work in the area of older adult ministries, and for the synod as a part-time consultant to retiring church workers."

SPC '63, **Sharon Sunderman Brown**, Clarinda, Iowa, has undergone heart surgery, and now the losing of sight along with leg pain.

SPC '74, SPC '76, **Mark Reder**, Scott City, writes, "It was good to return to campus after many years away for the '73-'74 reunion in July. Many thanks to alumni staff for their time."

SPCH '80, SPC '81, **Eric Baker**, Palmyra, is a freelance writer, is active in performing and community theatre, and works as a customer service rep for a major catalog company. Nearly 27 years after first playing the role of Tom Keeney in Concordia University Nebraska's production of *Funny Girl*, he returned to the role in the spring 2009 production of the musical for the Quincy, Ill., Community Theatre. Just recently he portrayed the role of Roger DeBris in Mel Brooks' *The Producers*."

SPLHS '94, **Jae Steinkuhler**, Concordia, works at *The Concordian* (Concordia's weekly newspaper) and has a new email: concordian@centurytel.net.

SPLHS '97, **Alicia Maggert**, Concordia, and SPLHS '03, **Rachel Roepe**, Alma, were in charge of the Thursday evening Kids Parade at the Concordia Fall Festival for the fifth consecutive year.

SPLHS '97, **Nikol Ziegelbein Wendt**, Rapid City, S.D., writes, "On May 30th I married Trevor Wendt and moved to his residence in Rapid City, only 15 minutes from Mt. Rushmore. I'm getting my Pampered Chef business going and will be substituting this school year to become familiar with the area."

SPLHS '04, **Marti Buchholz York**, Hoffman, Ill., married Jeremy Scott York in August of 2008. Her new address is P.O. Box 242, Hoffman IL 62250.

SPLHS '04, **Jared Stiek**, Norfolk, Neb., writes, "After graduating from Concordia University Nebraska, May 2009, and completing my DCE internship, I have been installed as DCE for Christ Lutheran in Norfolk.

SPLHS '07, **Isaac Dahlke**, Great Lakes, Ill., completed U.S. Navy basic training July 2 at Recruit Training Command at Great Lakes. He is stationed at Goose Creek, S.C.



Alumni Reunions Being Planned

The alumni office is aware of the following classes planning a reunion. If you know of a class planning a reunion that is not mentioned below, please email the alumni office at splhsalumni@yahoo.com

SPCH Class of 1956 — Herb Harfst, chairman of the reunion committee, has begun planning for the 55th anniversary reunion in 2011. Herb may be contacted at herbharfst@earthlink.net.

SPCH Class of 1960 — This class will hold its 50th anniversary in conjunction with the 2010 graduation on May 14, 2010.

SPCH Class of 1966 — Plans are to have another reunion in the St. Louis area in the summer of 2010.

SPCH Class of 1990 — Plans are being formulated for a 20-year reunion in 2010. To share ideas and suggestions, contact Kyle Fiene at kjfiene@centurytel.net.

Email Addresses Requested

The alumni office is requesting the email addresses of alumni for possibly sending the alumni newsletter electronically. Send your email address to splhsalumni@yahoo.com.

Alumna is Mother to 8,000 Children



From the time I was a little girl, I recall knowing in my heart of hearts that I wanted to have 16 children, live in a foreign country, and work in orphanages. I ran a little orphanage for dolls in our family's basement, setting up a classroom for them, complete with a chalkboard, and taught them all that I had learned in school each day.

MaryLee with her husband Roger and adopted daughter Ira from Russia. Ira is the eighth child MaryLee and Roger have adopted.

When I graduated from high school in 1962, I wanted nothing more than to become a teacher and I headed to St. Paul's College for the best two years of my life! After graduating from SPC in 1964 and Concordia River Forest in 1966, I was thrilled to be assigned a third grade teaching appointment at Concordia, Maplewood. In 1967 I married Don Fahrenbrink, another graduate of SPC '64 and together in 1970 we headed to the Philippines for his assignment as a missionary. I had to leave my teaching career behind, but the thrill of reaching one of my childhood dreams soon became a reality!

Having miscarried our first child enroute to the Philippines and learning that I probably would not be able to carry a child to term, we met with government officials to see about the possibility of adopting a Filipino child into our home. Within one month, we were placed with the most beautiful little girl whom we named Shelly. The bonding was instantaneous and within two years, we were back in the governmental offices requesting to adopt another. Jeremy was placed with us at six weeks of age.

It was while on a home leave back to the U.S. after our first three years on the mission field that we met so many families who begged us to assist them in adopting a child from the Philippines. Armed with dossiers on 60 families, we arrived back in the Philippines at the governmental offices once again...not for ourselves this time, but for the hopes and dreams of these 60 families. Within a few months, Hand In Hand was born.

Thirty-five years later, I have been blessed beyond measure to have placed over 8,000 orphaned and abandoned children from 26 countries of the world into loving Christian families across the United States. Licensed in five states in addition to a Hague International Licensure and approval to work in many countries, Hand In Hand International Adoptions consumes almost every waking moment of my days. As a non-profit 501(c)(3) organization, donations for the work of children around the world are thankfully accepted.

The smiles of the children who have been placed into "forever families" tell it all...from once abandoned to forever loved. Millions of children are still waiting to be given that gift of home and family. Help us spread the word! For more information, visit our Web site at www.hihiadopt.org.

MaryLee (Anderson) Lane (SPC '64)

Founder & CEO of Hand In Hand International Adoptions

Marylee@hihiadopt.org

24th Annual Benefit Auction & Hog Roast

June 27, 2010

Do you have an item(s) to donate
to help raise funds for your alma mater?

See www.splhs.org for more details.

Contact Gloria Burrow in the advancement office
at 660-463-2238 ext 231 or at gburrow@splhs.org