

P2

Executive &  
Administrative News

P9

Alumni  
News

P23

Upcoming  
Events

# The Celebrating Saint

## SPCH and SPC — A Training Base for Deployment



**F**ellow Saints of God! It was very humbling to be asked to write an article for our alumni newsletter. I am not sure there is much interesting news in my life to share with my fellow Saints (especially at my present job). In my previous duties I am not sure that just sharing “sea stories” and/or “war stories” would be appreciated either. Nevertheless, I know how hard it is to get people to share and know that I enjoy catching up on fellow Saints, so I agreed to do it and try to be as open as possible to how God got me to where I am today in 2012.

First of all, I can’t give thanks and praise enough to God for the blessings that He has bestowed upon me and my family. It truly did begin by being born into a loving Christian home, where my parents immediately brought me to the baptismal font to be received into the family of God on April 7, 1963.

I have no exciting “revelations” or “spiritual renewals” that I can remember. I was just raised by a father and mother who are devout Christian parents and ensured that I was raised in the fear and admonition of the Lord in the Lutheran Church by receiving the Word and Sacraments regularly. I have been further blessed with five sisters and three brothers, all of whom attended SPCH.

*Continued on page 6.*

# From the SPAA President...



## DID YOU KNOW?

- In 2011 the Alumni Association hosted a Meet and Greet table at the Homecoming Banquet? We were able to visit with alumni, students, and their families as they entered the dining hall. A door prize was awarded to student Jia Ying (Shirley) Lu. What fun!
- In 2011 our Board decided that the Homecoming and Courtwarming queens will no longer have to purchase their own tiaras. We will cover that cost.
- On December 13, 2011, the Alumni Association co-hosted a Celebration Dinner along with the Servants of the Saints (SOS) to recognize the students and their school accomplishments thus far this school year.

Now, as we begin 2012, I hope to accomplish even more to benefit both the Alumni Association and our beloved school. Works in progress include:

### 1) SERVANTS OF THE SAINTS (SOS) —

This group is open to anyone who supports SPLHS, not just parents! I have attended a number of their monthly meetings and am impressed by the number of activities this group plans/hosts for the school. By joining forces with this organization, we have a great opportunity for the alumni to become involved.

**2) FACEBOOK** — Many of our students, parents, and alumni are connected via the SAINT PAUL CONCORDIA Facebook page. In cooperation with Gloria Burrow, we are working to post information that will be of interest to the alumni. We would love for you to “friend” us.



Sara Larsen, left, SPAA president, discusses with SOS president Beth Hoppmann possible areas of cooperation.

### 3) ALUMNI ASSOCIATION BOARD —

Our Alumni Association board has a few open positions that we would love for YOU to fill! Serving on the alumni board is a wonderful opportunity to reconnect with the school, fellow alumni, and to be more involved with current activities on campus. We won't fill your calendar with meetings as we meet only three times a year. If you are interested in being a part our Board or simply want to know more, please contact the alumni office!

In HIS Service,

Sara N. (Rotermund) Larsen (SPLHS '94)

## Alumni Board of Directors

President — Sara Rotermund Larsen (SPLHS '94)

Vice President — Russell Kruse (SPCH '80, SPC '81)

Secretary — Mark Nebel (SPCH '82, SPC '83)

Treasurer — Markus Reinke (SPCH '60)

Leonard Goldammer (SPCH '56)

Judy Schreiman Marshall (SPC '72)

Curt Nierman (SPLHS '91)

Ed Nierman (SPCH '59)

Lambert Runge (SPCH '49)

Sam Ziegelbein (SPLHS '03)

# From the Executive Director... The Heat is On



**T**he heat is on. Literally. Today we have the first blast of winter in Concordia (which isn't bad since it's the middle of January already). You remember how it was: the icy wind that howls through the windows. Walking between Biltz and Kaepfel sideways as the air currents rip up

the hill straight into your face. If you lived in the dorms back in the older days, you might recall the steam filling the cold pipes and creaking through the entire building. No one needed an alarm clock. The pipes woke everyone up — but boy, could those radiators bring the heat!



The campus in winter is an interesting time. We are in the middle of classes, the middle of basketball season, the middle of drama practice, and polishing off the choir numbers for tour. The dorms are packed after school because it's really too cold to be outside and everyone is looking for protection from the elements. Everyone is in the middle of life, it seems, and perhaps not looking too far into the future because the plate is pretty full today.

Fast-forward 20, 40 or even 60 years later. Life can get a lot busier than high school in winter. What kind of coldness will our graduates face in this world when they put the decades behind them? How are we preparing them for the world which promises to go “from bad to worse?” (II Timothy 3:13) Perhaps our alumni could tell them, or better still show them, how it works.

You take the Word of God that you were taught here at Saint Paul and put it into practice. So much of the pressure that the world places upon people is worthless, such as compiling large amounts of money, jockeying for some sort of prestigious position, or simply trying to maintain the status quo. How do our former students deal with a cold, dark world?

From those who return to campus, I hear about lives that have value that lasts for eternity. It's not that our alumni are immune from cancer or downsizing or anything else that the sinful world throws at us. It's really about how the difficult times were placed into God's hands. Our graduates tend to be forward thinking and eternally-living people.

Who is modeling this for our present day students? Certainly their parents and congregations, but also our own faculty and staff. Just this month we've had four of our faculty members lose a parent. Entering their eternal glory were Larry Laubenstein's dad, Orlyn Heimsoth's mom, Gloria Burrow's mom and Bill Gasau's mother-in-law. In every case it was a joyous entrance into the kingdom of heaven. Our students were able to see several examples of how a Christian deals with difficult times of life in the bleak midwinter.

It was on the Road to Emmaus that the disciples remembered how their “hearts were warmed” by the words of Jesus. That same Word of God continues to warm the Saint Paul family — from the first semester freshman to the retired veteran of the cross. We still have radiators and we still have Christian educators preparing leaders to declare Christ to a cold, dying world.

*Rev. Paul Mehl (SPCH '78, SPC '80)*

**Alumni Office E-mail: [splhsalumni@yahoo.com](mailto:splhsalumni@yahoo.com)**

**Alumni Office Phone Number: 660.463.2238, Extension 517**

**Alumni Mailing Address: P.O. Box 719, Concordia, MO 64020**

# SPLHS Notes and News

---

In order for you to have a little touch with the campus today, this column will share some of the news from SPLHS.

Second semester started with an enrollment of 213. International students number 90, and domestic 123.

---

SPLHS has three honor rolls. For the 1st semester, 27 were on the Executive Director's Honor Roll (4.00-3.93), 40 on the Principal's Honor Roll (3.929-3.65), and 44 on the Honor Roll (3.649-3.25).

---

Rev. William Heine, religion instructor, has accepted a call to be headmaster and associate pastor at Memorial Lutheran Church and School in Houston, Texas. He and his wife, Melinda, will leave at the end of this school year.

---

The math team placed first in Division 2 with 385 points at the Smith-Cotton math relay on Jan. 28. Concordia High School placed second with 211 points, and Louisburg High School placed third with 167 points.

---

The spring play, *The Rehearsal*, will be performed in Kaepfel on March 16 and 17, 7:30 p.m. each evening.

---

Four soccer players have been selected to the Lutheran High School All America boys' soccer team. They are Sam Schmidt of Concordia, Mark Kinyanjui of Kenya, Nolan Peters of Waverly, and Nathaniel Lutz of Cole Camp.

---

As of Feb. 7, the basketball record of the Lady Saints is 9-9, the Saints 13-6.

---

Baseball practice has started in the gym and annex.

---

On Feb. 2nd the students elected student body officers for 2012-2013. They are Nolan Peters of Waverly, president; Kwang Min (James) Kim of Korea, vice-president; and Alicia Royuk of Seward, Neb., secretary.

## Can You Identify?

---



Can you identify the individuals in this photo above, the year it was taken, and the reason for the photo? The first alum to provide the answers by emailing the alumni office at [splhsalumni@yahoo.com](mailto:splhsalumni@yahoo.com) will receive a Saints hooded sweatshirt.



The first person to correctly identify the photo in the fall 2011 issue was Scott Borchardt

of Concordia. Scott received a Baepler Christmas ornament. The photo pictured the Biltz Dorm Council of 1978-79 academic year: Mark Wollenberg, Jonathan Finck, Michael Bingenheimer, Scott Borchardt, and Gregg Hein.

Scott Borchardt won the *Can You Identify?* prize of a Baepler Christmas tree ornament offered in the fall issue, and placed it on his tree for the Christmas season.



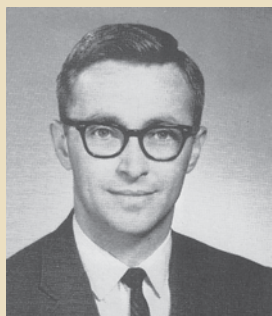
## Remember When?

---

Remember when Kaepfel was the gym and the band presented its concert from the stage?

# Harold Rast and Jerome Schwab Voted “Favorite Instructors”

Voting in 2011 for “favorite instructor” ended in a tie between Harold Rast and Jerome Schwab. Both men entered the faculty in the summer of 1960.



## Harold Rast

Harold Rast graduated from Concordia Seminary, St. Louis, in 1958. During his six years at SPC, Harold taught religion classes and physical education. In 1965 he was given assistant professor status. He was Director of Public Relations during the 1965 school year.

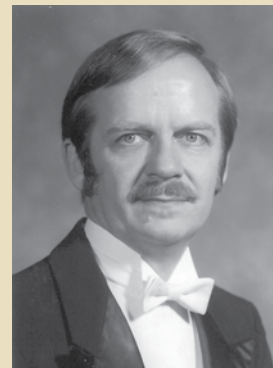
In addition to classroom teaching, Harold was acting dean in the area of counseling ('63), college men's resident hall counselor ('62), faculty advisor for the Brust house committee ('61), high school varsity basketball coach ('61), college baseball coach ('61), advisor for the Rifle Club ('62), and faculty advisor of the Blue Jay News ('66).

He left SPC to become executive editor for the LCMS Board of Parish Education, serving from 1966-1975.

Harold died October 13, 2004, following a long battle with pancreatic cancer.

## Jerome Schwab

Jerome Schwab graduated from Concordia Teachers College, River Forest in 1952. Prior to coming to SPC, Jerome was music instructor at CTC, and organist and elementary teacher at Messiah Lutheran Church and School in Independence.



Various instructors, including Dr. Norman Gienapp, had handled the college music program. In 1960 a college music department was established due to the increased enrollment of teacher training students. The opportunity to head the music department was offered to Jerome Schwab.

From 1962-1987, for 25 years, Jerome taught classes in music theory, history, and appreciation. He was also the organ instructor.

Jerome was director of the college choir. In later years the college choir was known as the Gloria Dei Chorale. He took his college choirs on concert tours to many states, thereby bringing the college to the attention of many people.

Jerome and his wife Diana live in Sunrise Beach.

## What Does it Mean to be Named “Favorite Instructor?”

Three honors have gone to instructors who have been called home to heaven. But for the two living at the time the honor was announced it had meaningful and emotional significance.

In 2010, the honor of “favorite instructor” went to Dr. Earl Fuhrmann. Dr. Fuhrmann responded, “I am deeply honored with the award. Over the many years of serving the church, especially SPCH and SPC, I enjoyed educating the many students I had the pleasure of meeting. I have fond memories of many students and hope I have played a part in shaping their lives as Christians and members of society.”

Dr. Fuhrmann's daughter, Joan Pennington, sent this note, “There isn't really a quote to give. He just had a big smile (when I told him about the award), and then he cried. He was so overcome with emotion and I had to read it three times. His expression said it all. He was so honored by it. I think he felt he had finally achieved what his life was all about.”

When Jerome was informed he was named “favorite instructor,” his response was, “I am honored to be chosen by former students with this honor.” Several times in the conversation, Jerome expressed heartfelt gratitude for this honor.

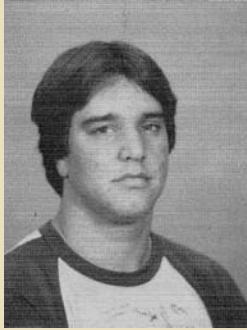
Others who received votes in 2011: Norman Gienapp, Jesse Kunkel, Leverage Baacke, Lewis Spitz, John Domsch, Paul Eichmann, John Engelbrecht, Richard Gove, Larry Grothaus, Roland Haas, Walter Loeber, Allen Nauss, Wilbert Rosin, Lorenz Wahlers, Oscar Walle. Previous favorite instructors: Lando Otto (2008); Emil Weis (2009); Dr. Earl Fuhrmann (2010).

Vote when you contribute. Every time an alumnus(a) sends a contribution to the Alumni Association, he/she has the opportunity to vote. To be named “favorite instructor” does have meaning and significance to the individual. Be sure to vote when you contribute.

A list of the instructors and instructions is on the website under “Vote for your favorite instructor.”

### Desire begins to unfold at SPCH and SPC

I remember almost always wanting to be a pastor like my father; however, during my 8th grade year, I began to waver a bit in many areas of my life. Thankfully, my sister and parents found information about this great LCMS boarding high school. At the time I enrolled in SPCH for my freshman year in the fall of 1977, my older sister Pam was enrolled as a junior.



I graduated in 1981 and stayed in Concordia to graduate from SPC in 1982, and was a resident assistant in Biltz Hall. Many of you who are reading this newsletter probably have many more stories to share (the good, bad, and the ugly) of high school life on the campus. Truly, we look back with fond

memories and also remember that even though we are “saints” by our baptism, and by our school mascot at SPCH, we know we are also sinners who desperately need forgiveness and guidance.

Finally, in June of 1991, I even married a “saint,” Kristen Mehl, who graduated in 1980 from SPCH. Kristen truly is a blessed saint as she married me thinking she would be a pastor’s wife in North Dakota and then I end up taking her on the adventure of being a Navy wife. She certainly can attest to the challenges that entails. We were chatting about



**Christmas 2010 the Muehler family spent at Camp Foster in Okinawa, Japan. This photo of the family was taken at the chapel following the Christmas Eve service. Beside Kristen and Craig is Seth (a freshman at SPLHS), front, left, Faith, age 9; Jesse, age 11; and Hope, age 9.**

it the other day and figured that I have been deployed away from home for almost five years. The longest deployment

was 13 months, during which time she was the “saint” who ran everything on the home front. We have been blessed with four wonderful children.

### SPCH spiritual formation

It is very difficult to point to any particular experience at SPCH and SPC that assisted me in my present vocation as a chaplain in the United States Navy. I believe it was the entire spiritual formation that I received at St. Paul’s and also at Concordia College, River Forest, and then Concordia Seminary, St. Louis. I think at the end of the day, the fondest memories and formation from SPCH and SPC is that you truly make friends for life. People you still keep in contact with (even if only via a Facebook post here and there) make you stop and smile as you recall the fun times you had with them at St. Paul’s. I truly believe that St. Paul’s was the second foundation of my preparation for what God had in store for me, the first being my solid Christian home life.

As a side note, I realize how often I took for granted another great blessing from St. Paul’s. It is the fact that you truly are surrounded by fellow Lutheran Christians, namely, the faculty, students, and citizens of Concordia, who support you in good times and bad times.

Now that I have my oldest son, Seth, attending Saint Paul and see the excitement and joy he has in being a part of that great Christian school and community, I know that we have made the right decision in sending him there. It is an



**Seth and his religion instructor, Rev. William Heine**

experience difficult to explain to those who haven’t been there. In fact, it isn’t uncommon to receive strange looks and questioning sighs as to how we can send our children away from home to live in a boarding high school when they are only 14 years old! In the end, it isn’t about “me” or “us” as Christian parents, it is about a good Christian education for our children along with the life-changing experiences of establishing friendships that will last for a long time.

*Continued on page 7.*

## SPCH and SPC — A Training Base for Deployment *(continued from page 6)*

For my fellow Saints alumni, I ask that you really consider sending your children to this great school. Why not give them the opportunity that you had?

### Lutheran military seek Lutheran chaplains

As I reflected on the following summary of my different duty stations and deployments, I am thankful for the opportunity that God has placed before me to ensure that there is an opportunity for our Lutheran men and women in uniform to receive the Gospel and Sacraments while they serve their country in some very austere and dangerous locations. In every one of the stations/duties listed, there were always Lutheran military personnel who were seeking a Lutheran chaplain to provide them with Word and Sacrament ministry. It is a humbling experience to be serving side by side with these brave and dedicated young people serving our nation.

### Call to active military duty

I am grateful for the training that SPCH and SPC provided in those times of isolation. I was commissioned into the Navy in 1986. At the time, I had never seen the ocean, never flown in an airplane and never been on a ship. Now, I can't even count my hours in the air and on the sea or the countries I have been to. I stayed in the reserves until 1991 when I was recalled to active duty.

At the time, I was serving the wonderful congregation of St. John's Lutheran Church in McClusky, N.D. I had just gotten married to Kristen on June 8, 1991, and received the call to come on active duty. I was hesitant as I was truly enjoying my call in McClusky, but after much prayer and counsel, I decided to accept the commission to come on active duty.

### Active duty journey

- We departed for our first duty station in August of 1991 (which was to Destroyer Squadron Thirty-One in Pearl Harbor, Hawaii).
- Following two years of sea duty, I accepted orders to be a staff chaplain at Naval Training Center, Great Lakes, Ill. I served there from 1993 until January of 1997.
- I then accepted orders back to Hawaii where I served as the chaplain for Naval Security Group Activity, Kunia until 2000.

- In 2000, I attended post-graduate school at Trinity International University in Deerfield, Ill., to receive a Masters of Theology in Pastoral Counseling.
- After graduation in 2001, I was blessed to receive orders to serve as the command chaplain for the USS Inchon home-ported in Ingleside, Texas.
- After my tour in Texas, I received orders to serve as a chaplain to 2D Marine Logistics Command in Camp Lejeune, N.C. That was the end of 2002, and shortly after we were ramping up for the beginning of Operation Iraqi Freedom and we deployed in April 2003.
- After being back for a few months, I was then on a special task force that deployed to Haiti in April 2004.
- Christmas of 2004 I received orders to be the Deputy Chaplain for 3D Marine Aircraft Wing, located in Miramar, Calif.



**Before leaving for a 13-month deployment to Iraq, Craig spends some “daddy time” with his children. Seth is at the left with Faith and Hope on each side of their dad. Jesse is in the front.**

- Shortly after arriving, I was deployed as the Wing Chaplain (Forward) to Iraq for 13 months.
- Upon my return I received orders to serve as a chaplain at the Naval Medical Center, San Diego. There I had the privilege of serving with the Wounded Warriors as well as any who came for care at the hospital in San Diego.
- In January 2009 I reported to 3D Marine Division located in Okinawa, Japan, as the Division Chaplain (covering units in Hawaii and Okinawa).

*Continued on page 8.*

## SPCH and SPC — A Training Base for Deployment *(continued from page 7)*



Iraq was where two SPCH grads met for the first time. David Stohs (SPCH '86), a Marine attaché to the U.S. Embassy in Moscow, was in Iraq the same time as was Craig.

- I served there until 2011 where I received orders to report as the Deputy Chaplain of the Marine Corps and work every day in the Pentagon. This is where I currently am serving. I have been in this billet for almost 7 months and am still learning the “ins and outs” of the Pentagon staff work.

It truly is a “staff” job and difficult to explain to those unfamiliar with the military culture. When my family came to visit my office at the Pentagon, my daughter, Faith, saw some shopping stores located in the Pentagon. She asked if all I did all day was “buy things.” Out of the mouth of babes....

In reality, my primary duties are **to assist** the Chaplain of the Marine Corps in advising the Commandant of Marine Corps on religious matters in reference to support, personnel, plans, programs, policy, and facilities within the USMC.

I **oversee** the work of military personnel who serve on the staff of the Chaplain of the Marine Corps and the efforts of all chaplains in supporting the morale and spiritual well-being of Marines and sailors assigned to Marine Corps units.

I **evaluate** programming goals set by the Chaplain of the Marine Corps and direct their implementation in the Chaplain Corps as appropriate.

I **coordinate** with the Chief of Navy Chaplains staff to ensure proper coordination of all matters pertaining to manpower, policy, planning, training, and public affairs.

I **oversee** the development of the Department of the Navy Strategic Plan for Religious Ministry within Marine Corps entities.

I am **charged with overseeing** all matters pertaining to Chaplain of the Marine Corps staff.



Craig, second from left, with some of his co-workers at a Religious Program Specialist Anniversary luncheon. These men work close together to carry out the duties and responsibilities of the chaplain’s office.

As I am forced to reflect on the past experiences that God has placed in my life, I am truly thankful and humbled by all the blessings that God has showered upon me and my family (as Luther says, “without any merit or worthiness in me or them”). I only pray that our Lord has used us as His instruments in this calling as a Navy Chaplain and serving as a missionary of The Lutheran Church-Missouri Synod. We know that it really isn’t about “us.” But it is about the people we are called to serve in our vocations. God has put us all in our stations in life for His purposes.

### A final plea

My fellow alumni, I plead again that you really think about sending your children to Saint Paul Lutheran High School. Why not give them the opportunity to have a spiritual formation and experience like we have had to prepare them for a challenging world ahead of them? Maybe your experience wasn’t perfect at SPCH and SPC; however, look at where you are now in your life. Don’t you think you are a better person for what you experienced (good and/or bad) at SPCH and SPC, because God worked it out for His good and in His own way?

It doesn’t take long to remember our sins and we are sinners (no school is perfect), but where else will your children hear so faithfully proclaimed (by faculty, staff and fellow students) that they are also forgiven by the grace of God and are now truly His Saints, called to do good works.

# Alumni Jottings

---

To share information about yourself in the next newsletter (mid-July), please use the lower half of the page recently sent to you announcing the newsletter posted on the Web. Mail to Alumni Coordinator, P.O. Box 719, Concordia MO 64020, along with your financial support.

---

**SPCH '31, SPC '33, John Uhlig Carlsbad, Calif.**, writes, "I'm probably one of your oldest alumni, now 98, retired, graduated from St. Louis sem in 1937. I live in a California retirement community, very nice, and lead a Bible class weekly here. Celebrated our 500th session on Sept. 16, 2011. I go more slowly now, but the Lord is still using me."

---

**SPCH '39, Delbert Rinne, Lincoln**, is still active at Heit's Point Lutheran Camp. He goes with Mark Nolte, the camp executive director, on speaking engagements, offers prayers at camp activities, is available to greet visitors to the camp, and is getting ready for a full spring and summer of activities.

---



**SPCH '40, SPC '42, Harlan Wendler, Springfield, Ill.**, was honored with the Erwin T. Koch Award at the St. Louis seminary alumni reunion banquet, an award given to the oldest reunion attendee. Along with his pastoral service to congregations in Oklahoma and Illinois, Wendler also served circuit, district, synod and the Seminary. *(Photo courtesy Concordia Seminary, St. Louis)*

Harlan Wendler also wrote, "Taking radiation treatments for cancer. Felt some sadness in passing of classmate Dr. E. Edward Hackman. He had shown me a basketball trophy from SPC from an All Concordia tournament. He purchased at SPC auction for \$1."

---

**SPCH '47, Tyrus Frerking, Overland Park, Kan.**, writes, "In April of 2010 my wife Sue and I moved into Tallgrass Creek, a retirement community in Overland Park. We both enjoy our new home, and are in good health. Our address is 13810 Metcalf Ave., Apt. 12018, Overland Park KS 66223; email: tyfrerking@sbc.global.net"

---

**SPCH '47, Albert Meier, Denham Springs, La.**, writes, "My arthritis is worse and my cancer keeps moving along, but I am personally well and happy. I have a wonderful family and friends."

**SPCH '48, James Reith, Scottsdale, Ariz.**, writes, "I'm 81 and still alive."

---

**SPCH '49, Paul Jilg, Little Rock, Ark.**, recently writes, "My wife passed away six years ago last Thanksgiving. Thank God for our Christian liturgy... "Therefore with angels and archangels and ALL THE COMPANY OF HEAVEN we laud and praise Thy glorious Name..."

---

**SPCH '51, SPC '53, Dean Greunke, Oviedo, Fla.**, writes, "Enjoying retirement at Lutheran Haven, Oviedo with wife Janette (Meyer, CHS 1952). We have three children, six grandchildren, and one great-granddaughter."

---

**SPCH '51, SPC '53, Rodney Scheer, San Diego, Cal.**, served as chaplain in the U.S. Navy. Regrets having missed the gathering of the four who attended the SPCH Class of '51 reunion last spring.

---

**SPCH '52, SPC '54, James Brockmann, Mesa, Ariz.**, writes, "On Nov. 6 I preached for the 50th anniversary of Holy Cross Lutheran Church in New Orleans where I served as the founding pastor. The church and community were flooded by 10 feet of water after Katrina. Thanks to Labors for Christ and Camp Restore, the church has been completely remodeled."

---

**SPCH '52, SPC '54, Don Miesner, Ballwin**, is working with classmate Don Normeyer, Wentzville, for the 60th year class reunion May 11-13 to be held on campus in Biltz Hall.

---

**SPC '52, Howard Hilsabeck, Wentzville**, recalls that when he was pastor at Timothy, Blue Springs, 1978-1982, SPC students came to Timothy to participate in an outreach program. At that time he also placed an outreach program before the faculty. He has put together a paper on outreach, specifically on the east coast, where he looks at the need to reach out, how to do it best, where we need to improve our method, how we can better train our seminary students, how we can learn Jesus' method of evangelism from John 4 and the Gospel of Mark.

*Continued on page 10.*

# Alumni Jottings

(continued from page 9)

---

**SPCH '54, Lloyd Holsten**, was inducted posthumously into the Concordia University Nebraska Athletic Hall of Fame on October 7, 2011. He was a three-year letter winner on the Concordia football team. Holsten taught at Bethlehem Lutheran School in St. Louis from 1961-66 and at Lutheran High School South in St. Louis from 1966-97. He died Nov. 26, 2003.

---

**SPC '59, Ronald Hilmer, Manchester**, requests you to keep him in your prayers as he continues his battle of 18 years with Parkinson's Disease.

---

**SPC '60, SPC '62, Mark Wegener, Richfield, Minn.**, writes, "Semi-retired; doing interim ministry in the Minneapolis area Synod ELCA. Promoting the ELCA's 'Book of Faith Initiative.'"

---

**SPCH '62, SPC '64, Howard Shane, Sioux Falls, S.D.**, has been granted professor emeritus status by the SPLHS Board of Trustees. Since August 2011 he has been teaching New Testament history at Lutheran High School of Sioux Falls.

---

**SPCH '62, SPC '65, Burk Hill, and his wife, SPC '66, Pat Buehrle Hill, Gaithersburg, Md.**, write, "We have started a new Chinese ministry and service in Germantown. Language is not anything like German."

---

**SPC '67, Andrea Brown Bader, St. Libory, Nebr.**, writes, "I taught at Zion Lutheran School (Worms) in Nebraska for three years, got married in 1971, had three children; had about a 35-year recess; took classes at the college at Kearney; and was a teacher's aide for two years in the public school system. I returned to Zion school again for two years teaching the same grades. I have enjoyed being in the choir and choir director at Zion. Have also been a member of the Ladies Aid, PTL, and really enjoy teaching Sunday School. It keeps me connected with the young ones in our church. We now have a granddaughter and another baby is forthcoming. Son number two is to be married in February. My husband and I have been truly blessed. To God be the glory!"

---

**SPCH '76, Jim Friedrich, Knoxville, Tenn.**, writes, "My wife and I are public school teachers. Our eldest son Stephen has been ordained, and is now serving his first congregation, in Amarillo, Texas. Our youngest son is a 14-year-old high school freshman. Last summer we spent five weeks at Nommensen University in Pematangsiantar, Indonesia, leading workshops in teaching English, school leadership, and computer software. We also worked with Sunday school teachers. We will likely return in 2012. For details see our blog: [friedrichfamilytravels.blogspot.com](http://friedrichfamilytravels.blogspot.com).



**SPCH '78, SPC '83, Phyllis Kassel McAlexander, St. Charles**, is an original bell ringer in the bell ringing choir at Immanuel Lutheran Church in St. Charles. Each year, the bell ringers perform prior to the presentation of the Boar's Head. Phyllis and her fellow musicians performed prior to the 25th anniversary performance last December.

---

**SPC '81, Paul Heins, Higginsville, and his wife, SPC '82, Cindy Loeber Heins**, celebrated their 30th wedding anniversary at the end of December with a family cruise to the western Caribbean. Enjoying the family celebration along with Paul and Cindy were their two sons, **Chris, SPLHS '04** and **Benjy, SPLHS '07**, and daughter **Sarah, SPLHS '10**.

---

**SPLHS '92, Beth Royuk Pester, Seward, Neb.**, is the director of Concordia University's middle-level education program. "We have been busy in the education department putting together a series of video clips called 'Teacher Tips.' Not only do current and former Concordia faculty offer their expertise in the videos, but also alumni who are teaching in schools all over the country." Each week Concordia's department of education publishes an email newsletter with a link to a short video featuring a new teacher tip. This can be seen by going to: [www.cune.edu/TeacherTips](http://www.cune.edu/TeacherTips). (Photo courtesy of Concordia University Nebraska.)



Continued on page 11.

# Alumni Jottings

(continued from page 10)



**SPLHS '01, Eric Bredehoeft, Emma, and Brianne Langkrahr, Concordia,** were married at Holy Cross Lutheran Church in Emma on October 22, 2011. Eric is employed at the Sweet Springs School District as maintenance supervisor. Brianne is a manager at the Austen Dooley Company in Lee's Summit.



**SPLHS '01, Nick Virus, Concordia, and SPLHS '08 Shannon Vogelsmeier, Concordia,** became engaged in early November on a Western Caribbean cruise. Shannon and her classmates were on the cruise as part of their final exam for the Tourism Destination class at Central Missouri State in Warrensburg. The wedding date is August 4, 2012, at St. Paul's Lutheran Church in Concordia.

**SPHLS '08, Paul Hoppmann, Mobile, Ala., and SPLHS '08, Jessica Mourey, Mobile, Ala. (both formerly of Concordia),** were married December 30, 2011, at St. Paul's Lutheran Church in Concordia. Haley Schelp, SPLHS '08, was a bridesmaid. Paul and Jessica attend the University of South Alabama. Jessica will graduate in May with a degree in geology. Paul will graduate at the end of this summer with a degree in exercise science.



## 2011 Homecoming

The Saints won their homecoming game against Knob Noster, 27-14.

With this game an era comes to an end. Beginning in 1997, football jersey 41 has been worn by a Hemme.

It started with Jon and concludes with Aaron. In between, Nathan and Michael have worn that number. These boys are the sons of R. David and Janet Hemme of Sweet Springs.



Traditionally at homecoming games the members of the team are individually introduced and then escorted onto the field by their parents. In the case of Aaron Hemme, second from left, it was a bit different. When it was Aaron's turn to be introduced, instead of his parents, his three brothers, in a surprise to Aaron, stepped forward to escort their brother onto the field. From left, Nathan ('05), Aaron (graduates this May), Michael ('08), and Jon ('02). Each brother wore his own football jersey.

## Homecoming Court 2011



Chelsea Nebel, left and John Traczewski were crowned the 2011 homecoming queen and king. Chelsea is the daughter of Mark (SPCH '82, SPC '83) and Cindy Muehler Nebel (SPCH '83) of Red Bud, Ill. John is the son of Ted and Diane Schelp (SPC Class of '77) Traczewski of Lexington. The princess and prince were Katee Lemmons and Mark Kinyanjui. Katee is the daughter of Bill (SPLHS principal, dean of students, and director of admissions) and Kathi Fritsche Lemmons (SPCH '83) of Emma. Mark is the son of Catherine Klanjiru of Nairobi, Kenya.

## In Memoriam

---



Dr. Earl Fuhrmann died Nov. 12, 2011, at Martinsville, Ind. Alumni who attended St. Paul's College remember Dr. Fuhrmann as their science instructor. In 1952, he joined the faculty and taught until his retirement in 1988. While at SPC he served as Professor of Science, Chairman of the Science and Math Division, Academic Dean

from 1965 to 1975, and as Acting President in 1986. He served during World War II as a captain in the U.S. Army Air Corps.

---



Ruth Gienapp, a resident at the Lutheran Good Shepherd Home in Concordia, died January 30. She would have celebrated her 104th birthday April 14. Ruth moved to Concordia in 1944 when her late

husband, Norman Gienapp, accepted the call to teach Latin and Greek at SPC. In addition to being a pastor's and professor's wife, Ruth was a teacher. She graduated from Northwestern University in Evanston, Ill. She taught math and science for seven years at Bethany Lutheran College in Mankato, Minn. It is there that she met Norman. From 1962-64 she taught math and German classes at SPC. In 1964 she began teaching at Concordia High School where she taught math and science until 1972.

---

SPCH '33, Elmer Pebler Tumwater, Wash., died in 2010. No further information has been received.

---

SPCH '51, Richard Ochs, Brownsburg, Ind., died Nov. 16, 2011, as a result of cancer and complications of PSP (Progressive Supranuclear Palsy). He was a 1955 graduate of Valparaiso University with a degree in Business Administration. He served in the U.S. Army from 1956-58. Most of his career was spent in data processing, first as a programmer, and later in management. His wife Donna adds, "He was a passionate follower of the St. Louis Cardinals and was able to watch them win the World Series last fall. He was a Christian man with great family values. We have three children of our own, and raised one foster son who is still a part of our family."

---

SPCH '65, SPC '67, Norman Dierking, St. Louis, died July 7, 2011. He served parishes in Kennett, Malden, Fredericktown, Gravelton, Jackson, Gordonville, St. Louis, Linn, and Drake, Mo.; Bloomfield, Neb.; and Des Moines, Iowa.

---

SPC '66, Arthur Goldberger, Lincoln, Ill., died Oct. 7, 2011. He served congregations in Shelbyville, Mo.; Strassburg, Vandalia, and Lincoln, Ill.

---

SPCH '67, Kenneth Roffmann, Portland, Ore., died Nov. 29, 2009, from secondary effects of lymphocetic leukemia.

---

Class of SPCH '86, Katherine Ott Chappell, Syracuse, died Oct. 10, 2011, following a motorcycle accident near Versailles. She attended SPCH the first semester of her senior year. At the time of her death she was employed at the Tipton Correctional Facility as a records officer, and was recently promoted to manager. Her daughter, Ashley Cox, is a 2011 SPLHS graduate.



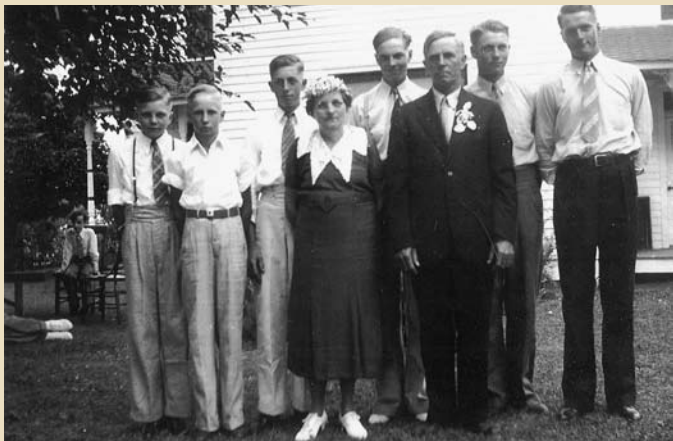
# ‘Surely One of These Boys Should Become a Pastor’

## A Young Son Heard the Call, Later Helps Others with Their Call

**A**lfred Rodewald (SPCH ’44, SPC Class of ’46), a retired pastor from St. Paul’s Lutheran Church in Concordia, is keenly aware of the need for training more students for full-time church work.

Rodewald grew up on a farm in southern Illinois. Together with his parents and five brothers, he attended a small, rural Lutheran church that frequently experienced a turnover of pastors. It was at this church where he first heard the comment that he long remembered and credits for leading him to train for full-time church work.

The occasion was the church’s annual mission festival. The guest preacher was a professor from Concordia Seminary in St. Louis. Following the morning service and while waiting on the church lawn for the afternoon service to begin, the professor met Rodewald’s parents. When he found out that the couple had six sons, he said, “Surely one of these boys should become a pastor.”



**Alfred Rodewald (left) in 1939 and his brothers, with their parents Rudolph and Blanche Rodewald on their 25th wedding anniversary.**

Rodewald was only a young boy at the time, but the professor’s comment stayed in his mind and in his heart. A few years later, when it was time for him to begin high school, his parents asked him — the second youngest of their sons — if he would like to try to become a pastor.

Remembering the seminary professor’s words to his parents, his reply was a simple “yes.”

Their church’s vacancy pastor—the same pastor who had arranged for Rodewald’s memorable mission festival day and had introduced his family to the seminary professor — assisted the parents in their next step. The pastor rode with them to Concordia and helped enroll the 14-year-old as a freshman at Saint Paul College High.

It was the fall of 1940 when Rodewald began his training to becoming a pastor. By the time he had completed high school and one year of college at Saint Paul’s, and not being totally certain that he wanted to be a pastor, he dropped out of school. He was quickly drafted into the U.S. Army and joined his four brothers there, and following the end of WWII, served in Japan for 20 months. During this time, he again became convinced that he wanted to be a pastor.

Upon his release from the Army, Rodewald enrolled in Concordia Theological Seminary at Springfield, Ill., and there completed his training for the pastoral ministry.

Over the ensuing years, Rodewald often was in conversation with his parents and brothers about the need to train more church work students for service in congregations such as their own rural church, Immanuel Lutheran, at West Point near Campbell Hill, Ill.

It was after his 1990 retirement from the pastoral ministry and while serving as durable power of attorney for a neighbor woman in Concordia that God opened a door for Rodewald to proceed with his long thought-about plan to assist church work students.

### “What can I do with the money?”

“I’ve inherited \$100,000 from my sister,” the woman told him. “What can I do with this? It is really the Lord’s money.”

With the woman’s consent, Rodewald explained to her his plan for Lutheran Leadership Education (LLE), a plan to assist full-time church work students in designated geographical areas with tuition help. After careful study, the woman, who had grown up in Nebraska, placed the full amount of her inherited money into endowment fund accounts for “LLE—Nebraska” and “LLE—Africa.”

*Continued on page 14.*

# ‘Surely One of These Boys Should Become a Pastor’ A Young Son Heard the Call, Later Helps Others with Their Call

(Continued from page 13.)



**Martin F. Kamara, principal of K-12 St. Paul Evangelical Lutheran School in Monrovia, Liberia, received tuition assistance from Lutheran Leadership Education, enabling him to obtain a bachelor's degree in Christian education. This degree qualifies him to serve as a high school principal as required by the Liberia Ministry of Education.**

Since that 1997 beginning, additional donors have added endowed gifts to the two funds and also created three more LLE funds: "Missouri," "Southern Illinois" and "Saint Paul Lutheran High School." In 2011, the five funds held more than \$437,000 in endowed funds to earn income to supply grants to full-time church work students attending Lutheran Church-Missouri Synod educational institutions.

In the same year, eight full-time church work students at Saint Paul Lutheran High School and ten at Concordia University Nebraska at Seward each received grants of \$500 to encourage them in becoming full-time church workers and help meet their financial needs at school. Since 1999, \$74,890 has been disbursed in 147 grants to full-time church work students.

The LLE grant program is directed by an eight-member board, with Ben Rodewald (SPCH '85), son of the founder, currently serving as chairman and as one of five donor advisors. Three appointed communicant members from St. Paul's Church in Concordia also serve on the board. (Two of the other donor advisors and two of the appointees

also are Saint Paul alumni: Ronald Heins (SPC '70), Kathryn Rodewald Oetting (SPC '74), Judy Marshall (SPC '72), and Markus Reinke (SPCH '60).)



**Alfred Rodewald with his wife, Ruth, and their children, (from left) Dr. Michael Rodewald (LCMS World Mission Regional Director for Africa); Kathryn Oetting SPC '74; Christine Small SPCH '75, SPC '76; John Rodewald SPC '82; Benjamin Rodewald SPCH '85.**

LLE funds are processed through Tri Co Community Foundation of Concordia and invested by Commerce Bank, Kansas City, Mo., to create income for grants

Although retired from his leadership position with LLE, Rodewald is always ready to speak for and give information about the program. He may be contacted at his home by phone, 660-463-7909.

*Gifts to the five established Lutheran Leadership Education Endowed Funds may be made by contacting Lutheran Leadership Education, c/o St. Paul's Lutheran Church, PO Box 60, Concordia, MO 64020-0060. A new LLE Endowment Fund may be made through the same address. A new fund needs \$60,000 or more to generate enough annual earnings to allow up to four \$500 grants to four full-time church work students from an LCMS district or from another geographical area attending an LCMS or affiliated church preparatory school.*

# Generous Support for SPLHS Comes from Ken Schroeder

**H**e never attended a class at SPCH nor SPC, never studied nor slept in Biltz Hall. Yet he has made his presence felt in the classroom and has left an impression in Biltz Hall.

His name is Ken Schroeder.

Ken Schroeder from Higginsville attends SPLHS through students. He has made Christian education possible for teenagers with scholarship donations to SPLHS. Several dozen students have received scholarship monies from his \$50,000 scholarship donation in 2011.



**Ken Schroeder (center), surrounded by some of the students who have been helped by scholarship donations he has made to Saint Paul Lutheran High School.**

For the 2012 school year, Schroeder once more presented SPLHS with a \$50,000 scholarship match grant that would double gifts made to the scholarship fund.

## Expressions of thanks

Last fall students expressed their thanks and appreciation to Schroeder for making Christian education a reality in the lives of international and domestic students.



**Mark Kinyanjui**, a senior from Kenya, shared these words with Ken Schroeder. “When I was approached with the opportunity to possibly meet the man who made my high school life

possible, I was in a daze! Even though I am thousands of miles from home, Saint Paul has provided a family for me. I have made friends who are now a part of my life, forever.

Thank you for changing my life in a positive way even before you met me. And on behalf of my family, Kenya, and all international kids, I say to you, ‘May God bless your living faith.’”

**Michael Nebel**,

a sophomore from Red Bud, Ill., said, “I thank you for being so grateful for all that God has given you and for your generous heart with our school. I myself, and many other students, have benefited from your gifts. I come from a family of many graduates of Saint Paul, and many, many church workers. Your gifts and contributions have allowed me to continue to go to school here to receive a good Christian education. While attending school I am involved in many things such as sports. I love the life I have here, and I love the family this school has become for me. Thank you, Mr. Schroeder, for sharing in my life.”



## Blitz Hall

Biltz Hall, an SPCH landmark, stood idle since 1986. It was a storage place for everything from unused mattresses to broken chairs and desks.



There was a dream in the mind of Rev. Keith Christiansen, director of development for SPCH in the 1990s. He was developing an education program for leadership training that would come to be known as Saint Paul Institute for Education (SPIFE). An ideal place for SPIFE would be Biltz Hall. A complete renovation would have to take place to make the building suitable for the program.

*Continued on page 16.*

# Generous Support for SPLHS Comes from Ken Schroeder *(Continued from page 15.)*

The finances would be a challenge. It was estimated at least \$3 million would be needed for a renovation.

## First major gift

In August 2003 Ken Schroeder contributed the first major gift, \$500,000, for the renovation project. He further pledged an additional \$500,000 dollar-for-dollar on any gift committed by the end of 2003. This provided \$1.5 million to start the project and bring the dream a step closer.

The project took off from there, and by 2006 Biltz Hall was gutted, interior construction completed, the exterior restored, and the old dorm had a new look. The lower level, and second and third floors have 32 motel-type rooms. The first floor has four conference rooms and administrative offices.

Though the historical name “Biltz Hall” has been retained, inside it is known as the Schroeder Memorial Leadership Center for SPIFE. Since its completion, hundreds of leadership training events have taken place at the center, with an emphasis on assisting rural/small town congregations.

“Ken has a real passion for ministries with a vision that extends beyond a local area,” said Rev. Christiansen. “He is truly a wonderful example of faithful stewardship and generosity.”

The name of the Center is in memory of Leo and Nora Schroeder, their son Harvey, and in honor of son Ken.



## Alumni return to their SPCH home

In addition to leadership training, the renovation to Biltz Hall has made it possible for former students, our alumni, to return to their “SPCH home” for a class reunion or conference.

When class reunions are held in Concordia, Biltz Hall is now reunion headquarters where alumni meet, eat and sleep. Though the original rooms and central bathrooms are gone, the memories of life in this building are lived and relived.

Biltz Hall, housing the Schroeder Memorial Leadership Center, is alive and doing well. The famous front doors are open to welcome alumni, whether for a night’s lodging or a weekend class reunion.

“Thank you, Ken Schroeder.”

## SPLHS Class of 1991 Reunion



Members of the SPLHS Class of 1991 attended their 20-year reunion in Concordia the second weekend in September 2010. In addition to a tour of the campus, recalling memories of dorm and classroom life, they met at the Heidelberg Gardens for meals and fellowship. Those attending were: front row, Curt Nierman, Derek Oetting, Brett Martens, Amy Beerman Gerdts, Kristen Gasau Anderson, Amy Kuecker McDonald; back, Mark Steitz, Jeremiah Weber, Chris Gerdts, Bryan Drebes, Kirk Clayton. *(Photo courtesy Kaleb Nierman Photography, Concordia.)*

# Memory of Cory Muehler Lives on at SPLHS

From 1985 to 1989 the name Cory Muehler was a familiar one on campus. Though he no longer is a student, nor a citizen of the U.S, but a citizen of heaven, he is still remembered on the SPLHS campus.

Every May at the awards banquet the “73 Award” is given in memory of Cory Muehler to a Saints football player who exemplifies the type of character and leadership shown by Cory in the classroom, in the dorm, and on the field.



At the awards banquet last May, football coach Larry Laubenstein presented the “73 Award” to Saints’ running back and defensive back Lennel Barksdale of Raymore.

His sister, Cindy Muehler Nebel, recalls, “Cory led by example. I recall that our local pool, where we had a membership, changed its rule about bringing guests. A guest had to live 10 or more miles away. Cory felt this rule was made because every guest day he would bring his friends who lived in town, those who could not afford a membership. He felt this new rule was unfair and unjust. He boycotted the pool for the entire summer! That was how Cory was.



“That is why we have the ‘73 Award.’ Cory always felt that the linemen who made it possible for the touchdowns were not always acknowledged. Cory believed often it’s the ones behind the scene that make it possible for others to succeed. That was OK with him. He was not looking for glory. He was a very humble, hard working young man.”

In addition to football, Cory played baseball, and was a

class officer and member of the National Honor Society.

The lighter side of Cory is recalled by his sister, Christy Muehler Pankoke (SPLHS ’87). “He would jam with his boom box in the SPLHS kitchen while spraying off dirty dishes and trays that would come through the window, and if you didn’t take the trash off your tray, he would spray you!

“I think Cory was a leader in the way he lived,” Christy continued. “He didn’t care about what was popular or cool, or necessarily cared if others approved. That part of his personality is what made him fun to be around, and is why, I think, people looked up to him. This came out especially with things he was passionate about: football, hunting, fishing, and hanging out with his friends.”



**Members of the Muehler family: front row, left, Jeremiah Brandt, Gary Muehler, Elois Muehler, Clara Nebel, Alicia Royuk (SPLHS ’13), Anna Royuk; second row: Pam Muehler Brandt (SPCH ’79), Sandra Muehler Royuk (SPCH ’84), Matthew Nebel, Cindy Muehler Nebel (SPCH ’83), Amy Muehler (SPLHS ’91), Mary Nebel SPLHS ’10), SPLHS football coach Larry Laubenstein; third row: Benjamin (Jamie) Brandt (SPCH ’79), Brent Royuk (SPCH ’84), Mark Nebel (SPCH ’82, SPC ’83), Michael Nebel (SPLHS ’14), Seth Muehler (SPLHS ’14), Kristen Mehl Muehler (SPCH ’80, SPC ’81), Chelsea Nebel (SPLHS’12), and SPLHS Athletic Director Monte Pitsch.**

Cory graduated in 1989 and went on to Concordia University Nebraska where he displayed the same qualities he did at SPLHS. He also played on the Bulldogs football team. His career goal was to be a pastor and he was enrolled in the pre-seminary studies at CUNE.

*Continued on page 18.*

# Memory of Cory Muehler Lives on at SPLHS *(Continued from page 17.)*



**Gary Muehler presents the check to Athletic Director Monte Pitsch and football coach Larry Laubenstein.**

He completed his sophomore year at the university. In the summer of 1991 an auto accident south of Sedalia claimed his life.

Cory's parents, Gary and Elois Muehler, have not forgotten the education and opportunities Cory had at SPLHS. They, along with their family, sponsor the "73 Award." The award carries Cory's jersey number 73, a number given to linemen.

This past summer the Muehler family visited campus to make a special presentation in Cory's memory. To mark the 20th anniversary of his death, the family collected \$2,500 as a memorial to purchase weight-lifting equipment to be used in the SPLHS weight room.



**Seth Muehler readies himself to push the handles as Michael Nebel adds another weight to the machine. Both students are nephews of Cory.**

The gift of money from the Muehler family was used to purchase the Attacker, equipment the athlete pushes on to lift the weights. This body-building machine is used to condition football players, but athletes of other sports also find it useful and helpful for their conditioning.

Both Athletic Director Pitsch and Coach Laubenstein have expressed appreciation for having this machine for conditioning athletes.

The memory of Cory Muehler lives on at SPLHS: every May with the "73 Award" and year-round in the weight room with training equipment to strengthen the bodies of the Saints.

## Court warming Court 2012



January 27 was the date for courtwarming and the students elected: Queen Suzanne Allen, daughter of Paul and Jennifer Allen of Sweet Springs; King Aaron Hemme, son of R. David and Janet Hemme of Sweet Springs; Princess Lauren Hamilton, daughter of Paul and Marti Cowherd of Higginsville; Prince Philip Sarpong, son of Emmanuel and Judith Sarpong of Clarinda, Iowa; page Elijah Rankin, son of Matthew and Allison Roepe (SPLHS '94) Rankin of Concordia; page JaeSi Hentges, daughter of Allen and Rachel Manning Hentges (SPLHS '88) of Oak Grove.

# Alumni Use Musical Talents At SPLHS Christmas Concert

The announcement informs that the SPLHS Concert Band and the Singing Saints will present their Christmas concert. You expect to see and hear the high school students.

You do. But there also were three alumni involved with the concert.



William Gasau, director of the concert band and Singing Saints, graduated from SPC in 1966. He returned to campus in 1968 and has been involved with the high school music program ever since.



When the Concert Band performs, usually you will find Orlyn Heimsoth playing the tuba. That was the case in the 2011 Christmas concert. Orlyn, the SPLHS technology director, graduated from SPCH in 1965 and SPC in 1967.



Those attending had the opportunity to sing several Advent and Christmas hymns in the concert program. Accompanying at the organ was Kathy Rodewald Oetting, a SPC '74 graduate.

## Help Locate 'lost' Alumni

Below are alumni whose current address we do not have. Any assistance (address, phone, email) will be appreciated. Email your information to the alumni coordinator at [splhsalumni@yahoo.com](mailto:splhsalumni@yahoo.com).

### Most recent from October 2011 mailing

Catherine Audas, Kansas City, MO  
 Linda Beise, Phoenix, AZ ..... SPC '66  
 Regina Griffin Conner, Independence, MO ..... SPC '79  
 Cindy Lauppe Cruse, Maple Hill, KS ..... SPCH '81  
 Dawn Day, Bloomington, IN ..... SPLHS '07  
 Teresa Horak Guenther, Iowa City, IA ..... SPC '79

Jennifer Hardee  
 Roger Harting, Vandalia, IL ..... SPC '67  
 Shannon Walsh Liptak, Woodbridge, VA  
 Catherine Poe, Palatka, FL ..... SPCH '81, SPC '83  
 Laura Ankney Pool, Richland Hills, TX ..... SPLHS '00  
 Diane Rice, Des Moines, IA ..... SPC '79  
 Larry Rogers, Minneapolis, MN ..... SPCH '61  
 Heidi Hummel Shafer, Memphis, TN ..... SPCH '84  
 Susannah Thamert, Texarkana, TX ..... SPLHS '92  
 Larry Warner, San Marcos, CA ..... SPCH '47  
 Jeanine Weinrich ..... SPC '71

# Alumna Continues Her Organ Playing And Love for Music



**W**hile attending a graduation party at SPLHS, Laura Snyder (SPLHS '10) was offered a position as organist at a unique church close to Concordia University Chicago where she is currently enrolled. While at SPLHS she served as chapel organist, sang with the Singing Saints, and was one of the choir accompanists.

This is her story.

I accepted this opportunity. The church is about 15 minutes from the university, in the city of Chicago, and is called Jehovah El Buen Pastor.

It is unique because the services are spoken in both Spanish and English. We follow Divine Worship Setting 1 every Sunday but instead of it all being spoken or sung in English, we speak or sing some parts in English and others in Spanish. Since the church is pretty evenly divided between Spanish and English speaking people, they usually speak whatever language they prefer for the entire service.

It is a fairly small congregation that used to be all German Lutherans, but about 50 years ago, the Spanish population started increasing in the neighborhoods so they decided to change the design of the worship services.

The first Sunday I was there I was very confused but I learned quickly how the services go. Along with playing organ every Sunday, I also conduct a small choir and I am going to start playing songs for the Sunday school children.

I have been blessed with this opportunity and I have learned something every Sunday I have attended.



On a recent recruitment and development trip to Florida, Ken Wesemann (SPC '80), SPLHS Advancement Director, met with alumni and people interested in SPLHS. Meeting with Ken in Delray Beach were (left) Paul (SPCH '64) and Nelda Shafland and John (SPCH '59, SPC '61) and Eileen Knoblock (SPC '61) Frerking.

## Newsletter Staff

Editor — Walter Loeber, Alumni Coordinator

Layout design — Amber Petersen (SPLHS '97)

Photographer — Rosalie Pennington

Proofreaders — Ruth Rodewald, Judy Loeber, Kathy Rodewald Oetting (SPC '74)

Technical advisor and website administrator — Orlyn Heimsoth (SPCH '65, SPC '67)

Faculty advisor — Dr. Kenneth Wesemann (SPC '80)

Some photos for this newsletter were provided by Rita Fiene, Gloria Burrow, and Carol Bruce.

Some information for this newsletter was supplied by SPLHS Historical Society, Concordia; Concordia Seminary, St. Louis; Concordia Historical Institute, St. Louis; Concordia University Nebraska, Seward.

# Alumni Financial News



The Little Blue Jug is awarded to the SPCH Class of 1949. They led all classes in 2011 with \$1,823 in contributions to support the Alumni Association. The jug and plaque are encased next to the elevator on the main

floor of Biltz Hall. Annually the jug goes to the SPCH or SPC class that contributes the most in support of the Alumni Association.

## Alumni Budget for 2012

Alumni Coordinator salary .....	\$7,200.00
Two scholarships (\$700 & \$500) .....	1,200.00
Homecoming speaker .....	100.00
Mileage .....	100.00
Newsletter (design, printing, mailing) .....	2,300.00
Stationery, envelopes .....	200.00
Supplies .....	500.00
Postage .....	400.00
Student recognition .....	500.00
Contest prizes .....	100.00
Miscellaneous .....	100.00

Total \$12,700.00

## 2011 Contributions by Class

Listed below are the 2011 contributions by class, the number of contributors, and the amount contributed.

### SPCH & SPLHS

Class	Contributors	Amount
Class of 1931	2	\$30
Class of 1937	1	72
Class of 1939	2	550
Class of 1940	5	47
Class of 1941	4	180
Class of 1942	2	50
Class of 1943	3	300
Class of 1944	1	25
Class of 1947	5	525
Class of 1948	2	200
Class of 1949	7	1,823
Class of 1950	3	100
Class of 1951	3	180
Class of 1952	6	255
Class of 1954	3	200
Class of 1955	1	25
Class of 1956	6	344
Class of 1957	3	200
Class of 1958	6	275
Class of 1959	5	450
Class of 1960	7	385
Class of 1961	7	660
Class of 1962	5	235
Class of 1963	2	70
Class of 1964	1	50
Class of 1966	2	60
Class of 1967	2	50

Class	Contributors	Amount
Class of 1969	1	15
Class of 1970	1	50
Class of 1971	9	410
Class of 1972	2	700
Class of 1973	4	500
Class of 1974	2	75
Class of 1975	5	140
Class of 1976	1	50
Class of 1977	6	190
Class of 1978	2	150
Class of 1980	4	300
Class of 1981	1	50
Class of 1982	2	250
Class of 1983	1	100
Class of 1988	1	100
Class of 1989	1	100
Class of 1990	2	100
Class of 1991	1	25
Class of 1992	2	45
Class of 1994	1	10
Class of 1995	1	20
Class of 1996	1	20
Class of 1997	12	585

### SPC

Class of 1933	2	30
Class of 1941	1	500
Class of 1942	5	47
Class of 1943	4	180
Class of 1944	2	50
Class of 1949	3	100
Class of 1951	4	1,023
Class of 1952	2	150
Class of 1953	2	130

Class	Contributors	Amount
Class of 1954	6	255
Class of 1956	4	50
Class of 1957	2	150
Class of 1958	5	170
Class of 1959	6	315
Class of 1960	4	260
Class of 1961	11	992
Class of 1962	11	405
Class of 1963	15	985
Class of 1964	7	225
Class of 1965	3	225
Class of 1966	4	250
Class of 1967	5	300
Class of 1968	1	50
Class of 1969	1	50
Class of 1970	3	90
Class of 1971	8	175
Class of 1972	6	395
Class of 1973	10	585
Class of 1974	5	1,450
Class of 1975	4	400
Class of 1976	1	50
Class of 1978	3	125
Class of 1979	2	70
Class of 1980	1	100
Class of 1981	5	225
Class of 1982	6	375
Class of 1983	2	300

# Singing Saints 40th Annual Tour Goes Southwest



## Pre-tour Appearances

- Sunday, February 5 • 9:00 a.m. • Trinity Lutheran Church • Norborne, Missouri  
Sunday, February 12 • 10:30 a.m. • Our Savior Lutheran Church • Sedalia, Missouri  
Sunday, February 19 • 10:00 a.m. • Grace Lutheran Church • Lexington, Missouri  
Wednesday, February 22 • 7:00 p.m. • Trinity Lutheran Church • Alma, Missouri

If you are in the area of a Singing Saints concert, come, hear and meet the Singing Saints and Director William Gasau.  
Traveling with the Singing Saints will be the Rev. Paul Mehl, Executive Director of SPLHS.

## The 40th annual tour for the Singing Saints is March 2-10 as they perform in the Southwest.

- Friday, March 2 • 7:30 p.m. • Faith Lutheran Church • Branson, Missouri  
Saturday, March 3 • 7:30 p.m. • Trinity Lutheran Church • Broken Arrow, Oklahoma  
Sunday, March 4 • 10:45 a.m. • Our Savior Lutheran Church • Tulsa, Oklahoma  
Sunday, March 4 • 7:00 p.m. • St. Paul Lutheran Church • Denton, Texas  
Monday, March 5 • 7:00 p.m. • St. Paul Lutheran Church • Giddings, Texas  
Tuesday, March 6 • 7:00 p.m. • Shepherd of the Hills Lutheran Church • San Antonio, Texas  
Wednesday, March 7 • 7:00 p.m. • Grace Lutheran Church • Midland, Texas  
Thursday, March 8 • 7:00 p.m. • Immanuel Lutheran Church • Roswell, New Mexico  
Friday, March 9 • 7:30 p.m. • Holy Cross Lutheran Church • Dodge City, Kansas  
Saturday, March 10 • 6:00 p.m. • Messiah Lutheran Church • Emporia, Kansas  
Sunday, March 18 • 7:00 p.m. • St. Paul's Lutheran Church (Home Concert) • Concordia, Missouri

# Alumni Reunions Being Planned

The alumni office is aware of the following classes planning a reunion. If you know of a class planning a reunion that is not mentioned below, please email the alumni office at [splhsalumni@yahoo.com](mailto:splhsalumni@yahoo.com).

**SPCH Class of 1952** — Don Miesner has initiated plans for a 60th anniversary class reunion on the campus May 11-13, 2012. Questions or for information, contact Don Miesner at [donmies@gmail.com](mailto:donmies@gmail.com); 636-527-8171.

**SPCH Class of 1962** — The 50th anniversary class reunion will be celebrated in conjunction with the graduation exercises on May 19, 2012. Questions can be directed to the SPLHS Development Office, 660-463-2238, ext 232.

**SPC Class of 1962** — Jane Schuette Petri has started work on bringing the class together for a reunion on the campus May 25-27, 2012, for its 50th anniversary. She can be contacted at [dandjpetri@msn.com](mailto:dandjpetri@msn.com).

**SPC Class of 1963** — The golden anniversary reunion will be the last weekend in June 2013 on campus. Bill Ewald, class president, is initiating the plans. He can be contacted at [wm.ewald@cuchicago.edu](mailto:wm.ewald@cuchicago.edu).

**SPC Class of 1965** — Inquiry has been made about a 50th anniversary class reunion in 2015. To express your thoughts, contact Cecil Roth at 314 N. College Ave., Geneseo IL 61254; 309-944-3791; [ceejames1@yahoo.com](mailto:ceejames1@yahoo.com).

**SPCH Class of 1968** — Ben Fruedenburg and Terry Herzberg are leading plans for a reunion June 22-24, 2012, in Colorado Springs. Ben can be reached at 7446 Roxbury Dr., Ypsilanti MI 48197; 603-750-2762; [freudb@cuss.edu](mailto:freudb@cuss.edu). Terry can be reached at 801 E. Baldwin St., Hacktettstown NJ 07840; 908-979-0024; [therzberg@att.net](mailto:therzberg@att.net).

**SPCH Class of 1972** — Edwin Doepel is heading plans for a 40th anniversary class reunion September 6-9, 2012, in Concordia. He can be reached at 630-484-7777; [pastured@crossroadsconnect.net](mailto:pastured@crossroadsconnect.net); 34 Winding Creek Road, Yorkville IL 60560.

**SPCH Class of 1983** — Plans for a 30th anniversary class reunion in 2013 are being made. Classmates can contact Teresa Maletich, 2504 Clifton Park Terrace, St. Louis MO 63139; [MrsMthrTeresa@sbcglobal.net](mailto:MrsMthrTeresa@sbcglobal.net).

For updates to these reunions, and the listing of additional reunions, go to [www.splhs.org](http://www.splhs.org), click on ALUMNI, click the tab ALUMNI UPDATES, scroll to REUNIONS BEING PLANNED.

## Baccalaureate Service

Friday, May 18, 2012 • 10:00 a.m.  
St. Paul's Lutheran Church, Concordia  
The Rev. James Dahlke, preacher

## Graduation

Friday, May 18, 2012 • 1:30 p.m.  
Weis Gymnasium  
Dr. Ray Mirly, president of the  
Missouri District, Speaker

## Saint Paul Hog Roast and Auction

### June 24, 2012

Hog Roast dinner 11:00 a.m. – 1:00 p.m.  
Krueger Dining Hall

Silent auction 11:00 a.m. – 1:00 p.m.  
Weis Gymnasium

Live auction begins at 2:00 p.m.  
Annex next to the gym

**DONATIONS FROM ALUMNI ARE WELCOME**

For information call 660-463-2238, ext 232